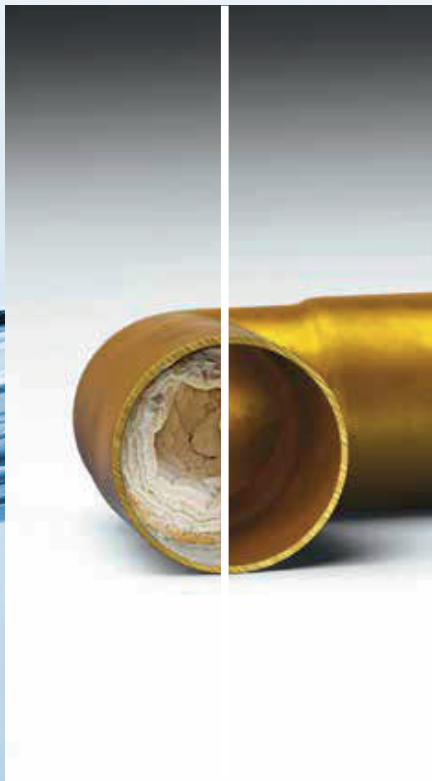


# Benefits and costs savings from water softeners



Protect your pipes and prevent limescale build-up, which would increase energy consumption when heating water.



Your household appliances such as washing machines, boilers, dishwashers, etc. will last longer and consume less anti-limescale products.



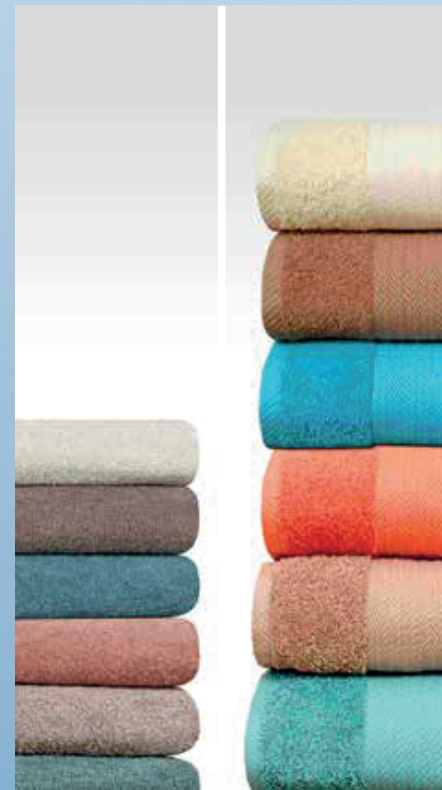
Protect your glassware and tableware from lime; save money by reducing anti-limescale chemical products.



Protect toilets and taps, and have them shining as new.



Well-being in the bathroom and the shower. Softened water is ideal for sensitive skin. Reduce costs in skin care products and moisturisers.



Your clothes will be cleaner and have brighter colours; fabric will be softer. Save soap and fabric softeners.



Non electric water softeners



Calmag Limited, Riverview Buildings, Bradford Road, Riddlesden,  
 Keighley, West Yorkshire BD20 5JH  
 Tel: 01535 210320 Fax: 01535 210321  
 E-mail: [sales@calmagltd.com](mailto:sales@calmagltd.com) Web: [www.calmagltd.com](http://www.calmagltd.com)

# The water softener range

# Components

# Specifications details



Designed according to the needs of installation technicians and professionals of the water treatment branch, the **Water Softener** equipment has the most advanced technology to facilitate installation and maximise reliability. The **Water Softener** valve, made of Noryl, has a totally hydraulic system and works without electricity.

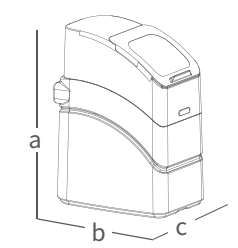
The **DIRECT ACCESS** system makes programming easier and guarantees a correct commissioning. **Water Softener** includes the revolutionary **SAVING REGEN** system. The most modern technology in water softening applied to the **Water Softener** equipment.



The Water Softener water softener range is available in two models: **Water Softener 8** and **11**, in function of its flow capacity and its hardness retention. Your distributor will carry out a technical study to determine which equipment suits your needs better.

	NE 8	NE 11
• Model	902803	902829
• Resin volume	7,4 liters	10,5 liters
• Working flow	1,8 m <sup>3</sup> /h	2,1 m <sup>3</sup> /h
• Maximum flow	2,1 m <sup>3</sup> /h	2,1 m <sup>3</sup> /h
• Exchange capacity	17,6°HFxm <sup>3</sup>	23,7°HFxm <sup>3</sup>
• Salt/regeneration	0,36 Kg Salt	0,36 Kg Salt
• Maximum hardness	60 °HF	73 °HF
• Water consumption/reg.	25	25
• Duration of the regeneration	15 min	
• Room temperature	Protection against freezing	
• Temperature range	1,7 - 45°C	
• Pressure range	1,7 - 8 bar	

• Pressure rating	8,6 bar	
• Dimensions (a x b x c)	508 x 500 x 293	608 x 500 x 297



Designed for the house and other commercial applications, **Water Softener** water softeners require little space and are capable of producing quick regenerations thanks to the **SPEED REGEN** system. Furthermore, the **Water Softener HIGH FLOW** system prepares the equipment to cover up to 100% of the needs from your house and other commercial installations.

**Standard bypass:** the bypass guarantees that the user can select the water he needs. It also includes a hardness mixing valve.

**Easy Access to the tank:** the accessibility to the tank allows using salt blocks or tablets in the same equipment.

**Design with easy-to-access lid:** the design of the **Water Softener** equipment makes installation and maintenance easier to reduce costs.



**1 SAVING REGEN SYSTEM**  
Low water and salt consumption. Environmentally safe. Standard bypass for residual hardness.

**2 DIRECT ACCESS**  
Water Softener valve without electricity. Ready to be used by simply turning a screwdriver.

**3 HIGH FLOW RESIN**  
Ultra-fast regeneration within 15 minutes

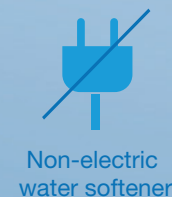
**4** Salt valve with safety floating valve.

**5** Fine Mesh compact monosphere resin bed. Great flow in little space.

**6** High quality housing made of heavy duty injection moulded plastic.

**7** Salt tablets

**8** Salt blocks



## NE 8 Model

15°HF	20°HF	25°HF	30°HF	35°HF	40°HF	50°HF	60°HF
914	685	548	457	392	343	274	228

## NE 11 Model

15°HF	20°HF	25°HF	30°HF	40°HF	50°HF	60°HF	70°HF
1250	938	750	625	469	375	313	268